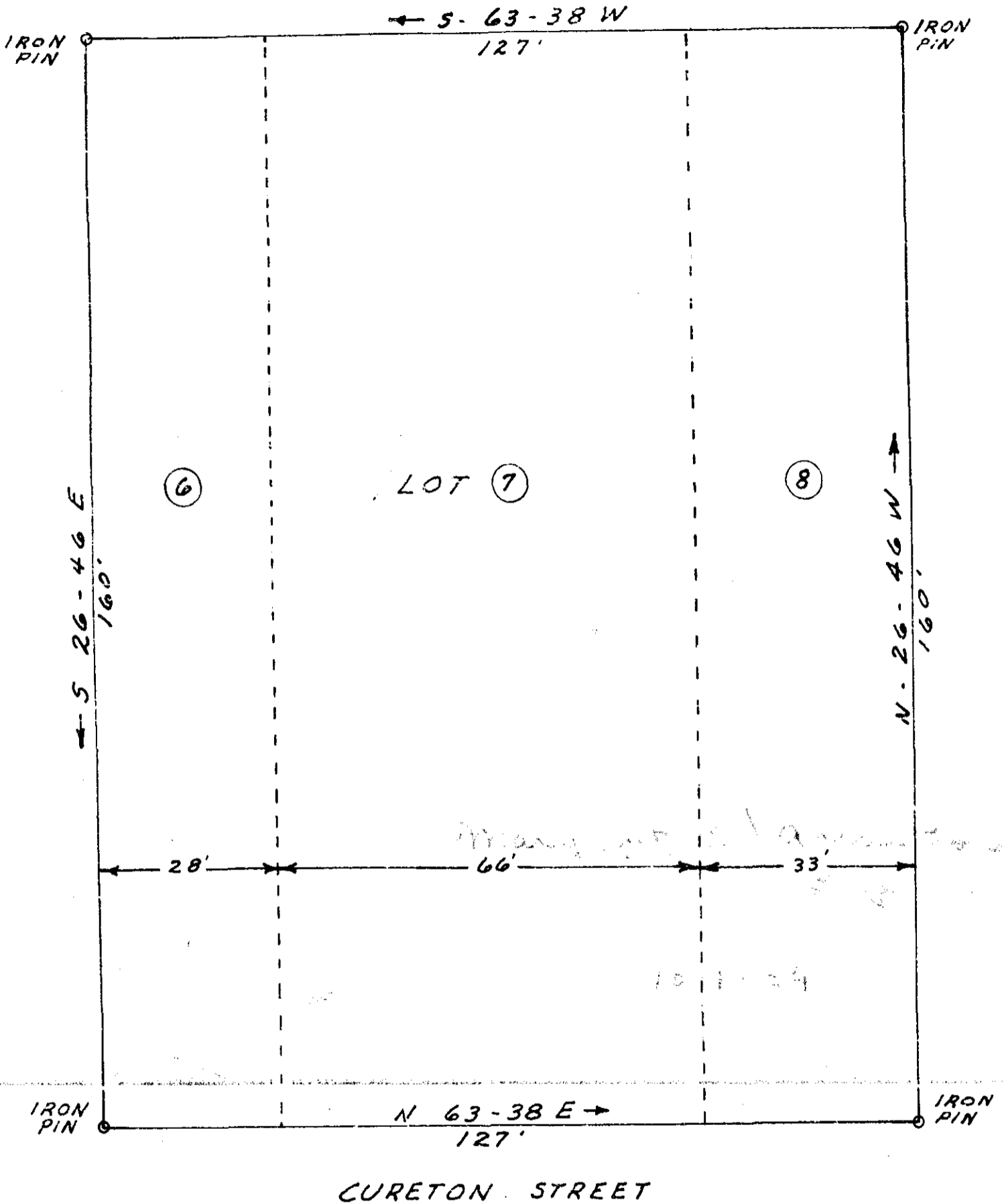


Plat Book TT, Page 39 B



PLAT OF MARGARET L. ARMSTRONG PROPERTY
SURVEYED BY: F.E. ARMSTRONG - LICENSED ENGINEER
SCALE: 1" = 20'

OCT 1 1959
10266

SIGNED: F. E. Armstrong 9/29/59
DATE

See 304

TT-39

10266 filed This 1 day of OCT 10 1959
and Recorded in Vol. TT Page 39 at
Edwin Samswood
Register Meane Conveyance Greenville County, S. C.